



DC PLUGS & JACKS

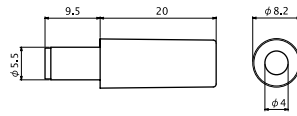
PLUG TYPE 5.5 × 2.1 & 5.5 × 2.5

No. MP-121M

5.5 × 2.1 DC PLUG (DC12V 0.5A)

No. MP-122M

5.5 × 2.5 DC PLUG (DC12V 1A)

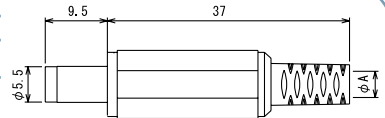


No. MP-121C

5.5 × 2.1 DC PLUG (DC12V 0.5A)

No. MP-122C

5.5 × 2.5 DC PLUG (DC12V 1A)



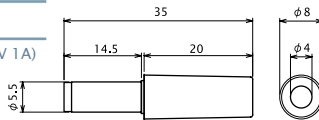
ϕA	$\phi 4$	MP-121C	MP-122C
	$\phi 5$	MP-121C/5	MP-122C/5

No. MP-136

5.5 × 2.1 LONG TYPE DC PLUG (DC12V 0.5A)

No. MP-137

5.5 × 2.5 LONG TYPE DC PLUG (DC12V 1A)

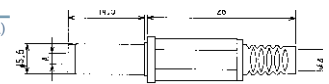


No. MP-136H

5.5 × 2.1 LONG TYPE DC PLUG (DC12V 0.5A)

No. MP-137H

5.5 × 2.5 LONG TYPE DC PLUG (DC12V 1A)

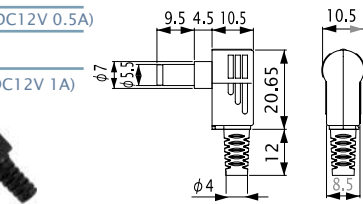


No. MP-136LN

5.5 × 2.1 RIGHT ANGLE DC PLUG (DC12V 0.5A)

No. MP-137LN

5.5 × 2.5 RIGHT ANGLE DC PLUG (DC12V 1A)



No. MC-2374

5.5 × 2.1 DC PLUG (DC12V 0.5A)

No. MC-2375

5.5 × 2.5 DC PLUG (DC12V 1A)



DC ADAPTOR CABLE L=1800mm

No. MJ-179P

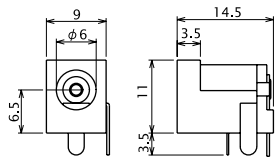
PLUG TYPE: 5.5 × 2.1 (DC12V 0.5A)

No. MJ-180P

PLUG TYPE: 5.5 × 2.5 (DC12V 1A)



DC JACK FOR P.C.B.



No. MC-2374L

5.5 × 2.1 DC PLUG (DC12V 0.5A)

No. MC-2375L

5.5 × 2.5 DC PLUG (DC12V 1A)



RIGHT ANGLE DC ADAPTOR CABLE L=1800mm

No. MJ-179SMT

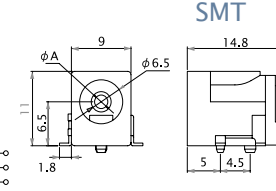
PLUG TYPE: 5.5 × 2.1 (DC12V 0.5A)

No. MJ-180SMT

PLUG TYPE: 5.5 × 2.5 (DC12V 1A)



DC JACK FOR P.C.B.



No. MJ-196P

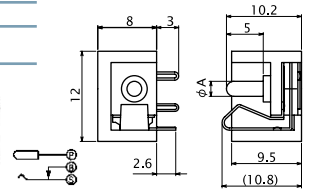
PLUG TYPE: 5.5 × 2.1 (DC12V 0.5A)

No. MJ-197P

PLUG TYPE: 5.5 × 2.5 (DC12V 1A)



DC JACK FOR P.C.B.



No. MJ-179LE

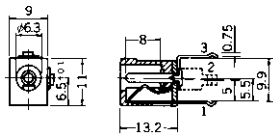
PLUG TYPE: 5.5 × 2.1 (DC12V 0.5A)

No. MJ-180LE

PLUG TYPE: 5.5 × 2.5 (DC12V 1A)



DC JACK FOR P.C.B.

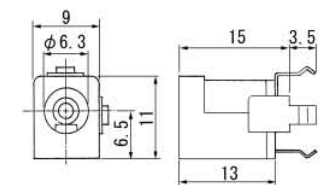


No. MJ-292DJ

PLUG TYPE: 5.5 × 2.1 (DC12V 0.5A)



DC JACK FOR P.C.B.

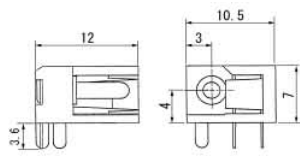


No. MJ-272DJ

PLUG TYPE: 5.5 × 2.1 (DC12V 0.5A)



DC JACK FOR P.C.B.



No. MJ-10

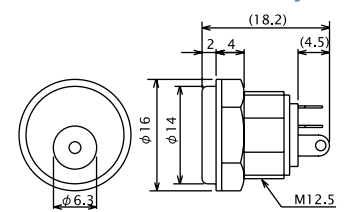
PLUG TYPE: 5.5 × 2.1 (DC12V 0.5A)

No. MJ-11

PLUG TYPE: 5.5 × 2.5 (DC12V 1A)



PANEL MOUNT DC JACK



No. MJ-14

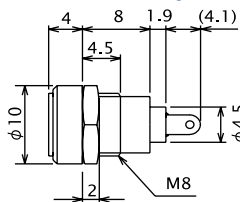
PLUG TYPE: 5.5 × 2.1 (DC12V 0.5A)

No. MJ-15

PLUG TYPE: 5.5 × 2.5 (DC12V 1A)



PANEL MOUNT DC JACK

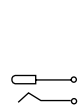


No. MJ-60

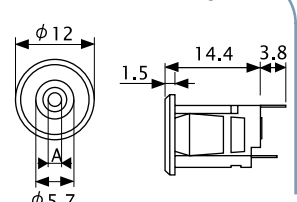
PLUG TYPE: 5.5 × 2.1 (DC12V 0.5A)

No. MJ-61

PLUG TYPE: 5.5 × 2.5 (DC12V 1A)



SNAP-IN MOUNT DC JACK





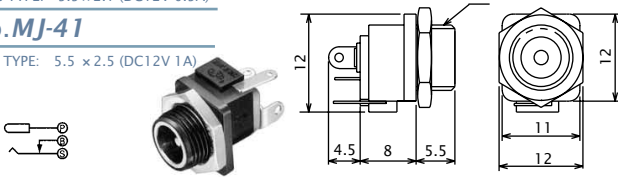
DC PLUGS & JACKS

PLUG TYPE 5.5 × 2.1 & 5.5 × 2.5

No. MJ-40

PLUG TYPE: 5.5 × 2.1 (DC12V 0.5A)

PNANEL MOUNT DC JACK



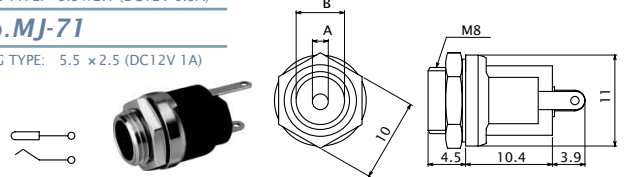
No. MJ-41

PLUG TYPE: 5.5 × 2.5 (DC12V 1A)

No. MJ-70

PLUG TYPE: 5.5 × 2.1 (DC12V 0.5A)

PNANEL MOUNT DC JACK



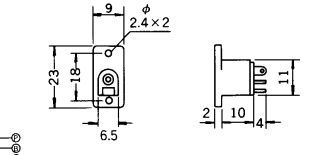
No. MJ-71

PLUG TYPE: 5.5 × 2.5 (DC12V 1A)

No. MJ-181M

PLUG TYPE: 5.5 × 2.1 (DC12V 0.5A)

PNANEL MOUNT DC JACK



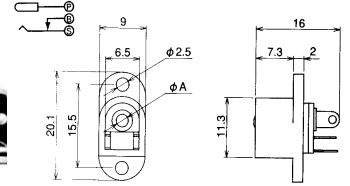
No. MJ-182M

PLUG TYPE: 5.5 × 2.5 (DC12V 1A)

No. MJ-179

PLUG TYPE: 5.5 × 2.1 (DC12V 0.5A)

PNANEL MOUNT DC JACK



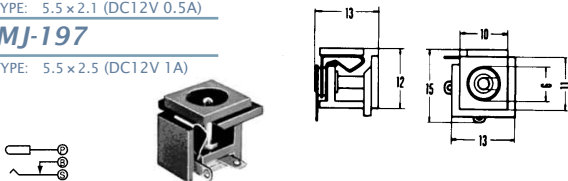
No. MJ-180

PLUG TYPE: 5.5 × 2.5 (DC12V 1A)

No. MJ-196

PLUG TYPE: 5.5 × 2.1 (DC12V 0.5A)

DC JACK INSERT TYPE



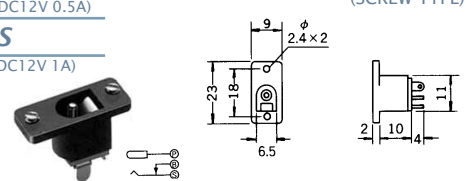
No. MJ-197

PLUG TYPE: 5.5 × 2.5 (DC12V 1A)

No. MJ-181MS

PLUG TYPE: 5.5 × 2.1 (DC12V 0.5A)

PNANEL MOUNT DC JACK (SCREW TYPE)



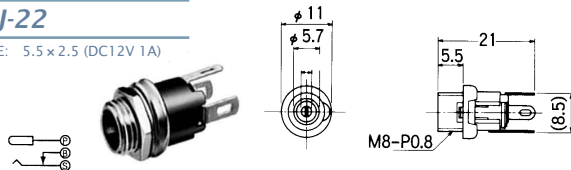
No. MJ-182MS

PLUG TYPE: 5.5 × 2.5 (DC12V 1A)

No. MJ-21

PLUG TYPE: 5.5 × 2.1 (DC12V 0.5A)

PNANEL MOUNT DC JACK



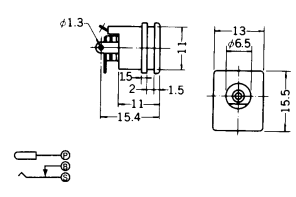
No. MJ-22

PLUG TYPE: 5.5 × 2.5 (DC12V 1A)

No. MJ-196E

PLUG TYPE: 5.5 × 2.1 (DC12V 0.5A)

DC JACK INSERT TYPE



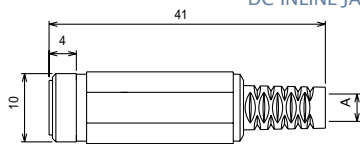
No. MJ-197E

PLUG TYPE: 5.5 × 2.5 (DC12V 1A)

No. MJ-077N

PLUG TYPE: 5.5 × 2.1 (DC12V 0.5A)

DC INLINE JACK



No. MJ-078N

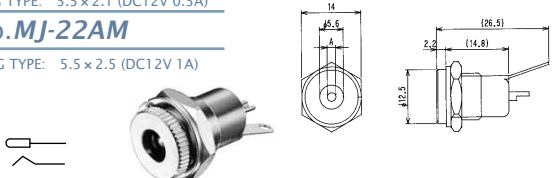
PLUG TYPE: 5.5 × 2.5 (DC12V 1A)

A	4	MJ-077N	MJ-078N
	5	MJ-077N/5	MJ-078N/5

No. MJ-21AM

PLUG TYPE: 5.5 × 2.1 (DC12V 0.5A)

PNANEL MOUNT DC JACK



No. MJ-22AM

PLUG TYPE: 5.5 × 2.5 (DC12V 1A)

No. MC-2376

PLUG TYPE: 5.5 × 2.1 (DC12V 0.5A)

DC EXTENSION CABLE L=1800mm



No. MC-2377

PLUG TYPE: 5.5 × 2.5 (DC12V 1A)

No. MJ-23

PLUG TYPE: 5.5 × 2.1 (DC12V 0.5A)

DC INLINE JACK FOR MOLDING



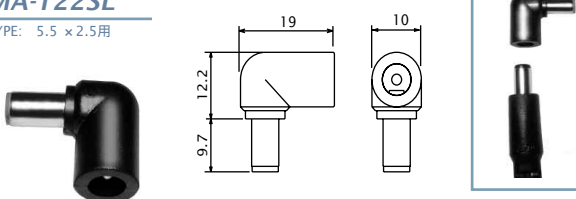
No. MJ-24

PLUG TYPE: 5.5 × 2.5 (DC12V 1A)

No. MA-121SL

PLUG TYPE: 5.5 × 2.1用

DC PLUG ADAPTOR STRAIGHT PLUG TO RIGHT ANGLE PLUG



No. MA-122SL

PLUG TYPE: 5.5 × 2.5用

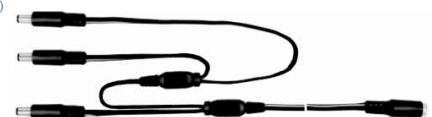
No. MC-1J3P

1 JACK 3 PLUGS (5.5 × 2.1mm) (DC12V 0.5A)

DC CENTIPEDE POWER CABLE

No. MC-1J5P

1 JACK 5 PLUGS (5.5 × 2.1mm) (DC12V 1A)



Other combinations are available upon request.